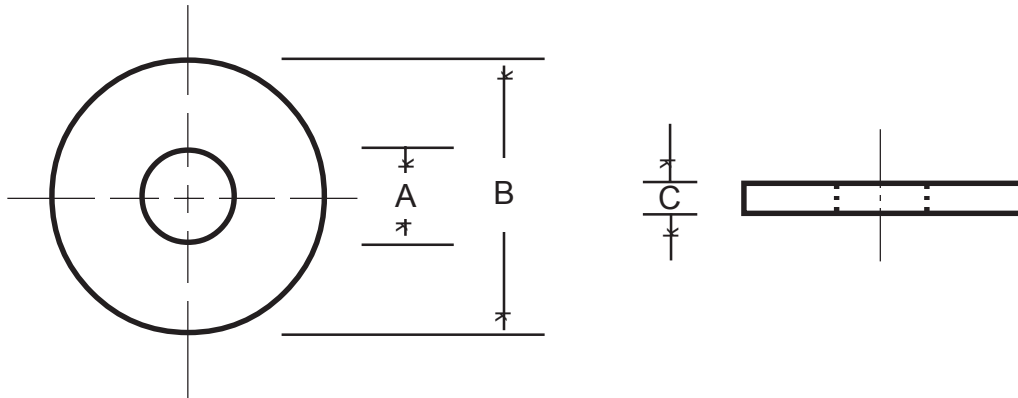


Standard Flat Washer Data



| INSIDE DIA. "A" | OUTSIDE DIA. "B" | THICKNESS "C" | MAY BE USED WITH | PART NUMBERS FOR STEEL WASHERS |
|-----------------|------------------|---------------|---------------------------------------|--------------------------------|
| .100 | .375 | .032 | 3/32" dia. rivets # 3 blind rivets | W100375032V |
| .128 | .312 | .042 | 1/8" dia. rivets | W128312042V |
| .128 | .375 | .042 | # 4 blind rivets # 10 belt rivets | W128375042V |
| .160 | .500 | .042 | 9/64" dia. rivets # 8 belt rivets | W160500042V |
| .170 | .375 | .032 | 5/32" dia. rivets # 5 blind rivets | W170375032V |
| .196 | .500 | .042 | 3/16" dia. rivets | W196500042V |
| .196 | .500 | .060 | # 6 blind rivets | W196500060V |
| .266 | .625 | .060 | 1/4" dia. rivets # 8 blind rivet | W266625042V |

Flat washers are supplied in steel, stainless steel, aluminum, brass and copper — bare or plated to your specifications. Please inquire for sizes and materials not shown.