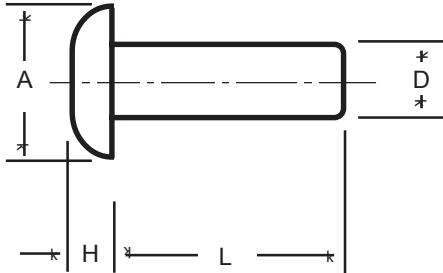


Universal Head Aluminum Rivet Data



NOMINAL SHANK DIA.	SHANK DIA. "D"	HEAD DIA. "A"	HEAD THICK. "H"
1/16	.060/.065	.119/.131	.027/.037
3/32	.090/.096	.179/.197	.040/.050
1/8	.121/.127	.238/.262	.054/.064
5/32	.152/.158	.296/.328	.067/.077
3/16	.182/.191	.356/.394	.080/.090
1/4	.244/.253	.475/.525	.107/.117
5/16	.305/.317	.594/.656	.133/.143
3/8	.365/.380	.713/.787	.161/.171

APPROXIMATE NUMBER OF ALUMINUM RIVETS IN 1 POUND

RIVET LENGTH "L"	SHANK DIAMETER "D"							
	1/16	3/32	1/8	5/32	3/16	1/4	5/16	3/8
1/8	16,667	6,250	3,040	1,712	1,136			
3/16	12,658	4,926	2,457	1,418	952	427		
1/4	10,204	4,049	2,066	1,212	813	377	214	149
5/16	8,547	3,436	1,783	1,057	714	338	193	135
3/8	7,353	2,994	1,565	935	633	306	177	123
7/16	6,452	2,646	1,397	840	571	279	163	114
1/2	5,747	2,375	1,261	763	521	257	151	105
9/16	5,181	2,151	1,148	699	476	238	141	98
5/8	4,717	1,969	1,055	645	441	222	132	92
11/16	4,329	1,811	971	599	408	207	124	86
3/4	4,000	1,681	909	559	382	195	117	81
13/16	3,736	1,574	852	526	360	185	111	77
7/8	3,472	1,466	794	493	337	174	105	73
15/16	3,270	1,383	752	467	319	166	100	40
1	3,067	1,300	709	441	301	157	95	66
1 - 1/8		1,168	637	398	273	143	87	61
1 - 1/4		1,059	581	364	249	132	81	56
1 - 3/8		971	535	334	229	122	75	52
1 - 1/2		893	493	310	212	113	69	49
1 - 5/8		834	460	290	199	106	65	46
1 - 3/4		775	427	270	185	99	61	43
1 - 7/8		728	402	254	174	94	58	40
2		680	377	238	163	88	55	38

The most popular aluminum materials are 1100F ("soft") and 2117T4 ("hard") — less common alloys include 5052F, 6061T4 and 6053T61. Universal head rivets can be produced in other materials such as carbon steel, stainless steel, copper, brass, etc. Please inquire.