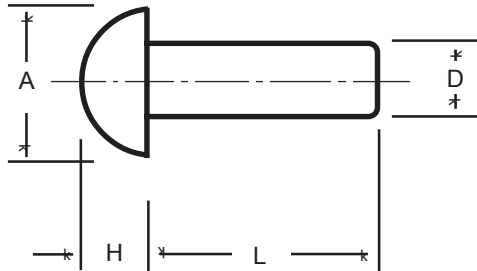


Round Head Aluminum Rivet Data

IMPORTANT NOTE - Round head **aluminum** rivets differ from round head rivets made from other materials, the head being substantially larger in diameter. See separate data sheet - "Standard Button (Round) Head Rivets".



NOMINAL SHANK DIA.	SHANK DIA. "D"	HEAD DIA. "A"	HEAD THICK. "H"
1/16	.060/.065	.115/.131	.042/.052
3/32	.090/.096	.179/.197	.065/.077
1/8	.121/.127	.238/.262	.088/.100
5/32	.152/.158	.296/.328	.110/.124
3/16	.182/.191	.356/.394	.133/.147
1/4	.244/.253	.475/.525	.180/.196
5/16	.305/.317	.594/.656	.225/.243
3/8	.365/.380	.713/.787	.271/.291

APPROXIMATE NUMBER OF ALUMINUM RIVETS IN 1 POUND

RIVET LENGTH "L"	SHANK DIAMETER "D"							
	1/16	3/32	1/8	5/32	3/16	1/4	5/16	3/8
1/8	13,833	4,897	2,324	1,286	778			
3/16	10,913	4,037	1,970	1,113	685	319		
1/4	9,012	3,434	1,709	981	612	291	160	98
5/16	7,675	2,988	1,510	877	553	267	149	92
3/8	6,683	2,644	1,352	793	505	246	139	86
7/16	5,918	2,371	1,224	724	464	229	130	81
1/2	5,310	2,149	1,118	666	429	214	122	77
9/16	4,816	1,966	1,029	616	399	200	116	73
5/8	4,406	1,811	953	573	373	189	109	69
11/16	4,060	1,679	888	536	351	178	104	66
3/4	3,764	1,564	830	504	330	169	99	63
13/16	3,525	1,471	783	476	313	161	94	60
7/8	3,286	1,377	736	449	296	153	90	58
15/16	3,101	1,303	698	427	182	146	86	56
1	2,916	1,230	661	405	269	140	83	54
1 - 1/8	2,620	1,111	600	369	246	129	77	50
1 - 1/4	2,379	1,013	549	339	226	119	72	47
1 - 3/8		931	505	313	210	111	67	44
1 - 1/2		861	469	291	196	104	63	41
1 - 5/8		805	439	273	184	98	59	39
1 - 3/4		749	410	255	172	92	56	37
1 - 7/8		406	387	241	163	87	53	35
2		663	364	227	154	83	51	34

The most popular aluminum materials are 1100F ("soft") and 2117T4 ("hard") — less common alloys include 5052F, 6061T4 and 6053T61. Rivets to these dimensions are not normally produced in any material other than aluminum and its alloys.