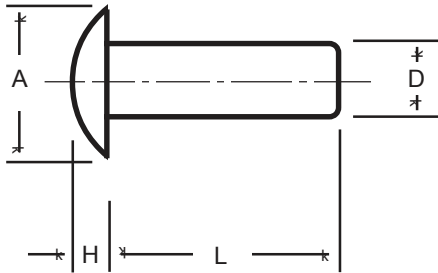


Modified Brazier Head Aluminum Rivet Data



NOMINAL SHANK DIA.	SHANK DIA. "D"	HEAD DIA. "A"	HEAD THICK. "H"
1/16	.060/.065	.109/.123	.020/.030
3/32	.090/.096	.146/.166	.026/.036
1/8	.121/.127	.225/.245	.042/.052
5/32	.152/.158	.302/.322	.056/.068
3/16	.182/.191	.381/.401	.071/.085
1/4	.244/.253	.459/.479	.087/.101
5/16	.305/.317	.610/.640	.117/.133
3/8	.365/.380	.766/.796	.149/.163

APPROXIMATE NUMBER OF ALUMINUM RIVETS IN 1 POUND

RIVET LENGTH "L"	SHANK DIAMETER "D"							
	1/16	3/32	1/8	5/32	3/16	1/4	5/16	3/8
1/8	19,231							
3/16	14,085	6,188	2,932					
1/4	11,111	4,876	2,392	1,362	840	478		
5/16	9,174	4,023	2,016	1,168	735	417	223	
3/8	7,813	3,423	1,745	1,025	649	369	202	
7/16	6,803	2,980	1,536	909	584	331	184	
1/2	6,024	2,638	1,373	819	531	300	169	
9/16	5,405	2,366	1,240	746	485	274	156	
5/8	4,902	2,145	1,132	684	448	253	145	91
11/16	4,484	1,962	1,040	632	414	234	136	86
3/4	4,123	1,808	961	588	387	218	128	81
13/16	3,847	1,685	900	551	364	205	120	76
7/8	3,571	1,562	840	515	341	192	113	72
15/16	3,353	1,469	790	486	323	182	108	69
1	3,135	1,375	740	458	305	172	103	66
1 - 1/8	2,801	1,228	666	413	276	155	93	60
1 - 1/4	2,532	1,110	602	375	251	141	85	55
1 - 3/8		1,012	549	344	232	130	79	51
1 - 1/2		930	507	317	214	120	73	48
1 - 5/8		865	476	296	200	112	68	45
1 - 3/4		801	440	275	186	105	64	42
1 - 7/8		752	413	259	175	98	60	40
2		703	387	243	165	92	57	38

The most popular aluminum materials are 1100F ("soft") and 2117T4 ("hard") — less common alloys include 5052F, 6061T 4 and 6053t61. Rivets to these dimensions can be produced in other materials such as carbon steel, stainless steel, copper, brass, etc.