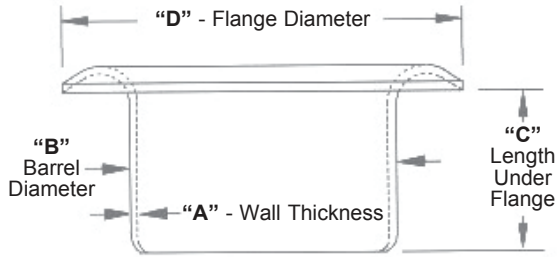


Standard Brass Eyelet Data



Eyelets can best be described as low cost, hollow rivets. Unlike tubular rivets they are completely tubular, and like rivets one end must be upset to retain them in place.

The eyelet originated as a hole reinforcement in fabrics and leather to receive laces and cords and was used almost exclusively in shoes and corsets.

Today eyelets are used extensively in the electrical, electronic, automotive, appliance, garment, toy, paper and packaged goods industries, among others.

Stephens can supply eyelets with square barrels, square flanges, or as twin and triple eyelets on a common flange. Many other configurations can be produced to satisfy new and unusual design applications.

		"D" - Flange Diameter $\pm .006$ "						
		.105	.150	.200	.245	.290	.340	.385
		"B" - Barrel Diameter $\pm .003$ "						
"C" Length Under Flange $\pm .008$ "		.059	.089	.121	.152	.183	.215	.246
		"A" - Wall Thickness						
		.006	.008	.0095	.010	.011	.011	.011
.094	3/32	SE23	SE33	SE43	SE53	SE63	SE73	SE83
.125	1/8	SE24	SE34	SE44	SE54	SE64	SE74	SE84
.156	5/32	SE25	SE35	SE45	SE55	SE65	SE75	SE85
.187	3/16	SE26	SE36	SE46	SE56	SE66	SE76	SE86
.219	7/32	SE27	SE37	SE47	SE57	SE67	SE77	SE87
.250	1/4		SE38	SE48	SE58	SE68	SE78	SE88
.281	9/32		SE39	SE49	SE59	SE69	SE79	SE89
.312	5/16			SE4-10	SE5-10	SE6-10	SE7-10	SE8-10
.344	11/32			SE4-11	SE5-11	SE6-11	SE7-11	SE8-11
.375	3/8					SE6-12	SE7-12	SE8-12
.406	13/32					SE6-13		SE8-13
.437	7/16					SE6-14		SE8-14

Stephens supplies a complete range of eyelets including metric and special sizes. Other materials such as aluminum and steel as well as a wide variety of finishes including colour matched paints are also available. Please inquire for details.