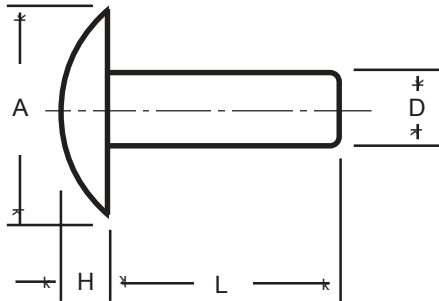


Brazier Head Aluminum Rivet Data



| NOMINAL SHANK DIA. | SHANK DIA. "D" | HEAD DIA. "A" | HEAD THICK. "H" |
|--------------------|----------------|---------------|-----------------|
| 1/16 | .060/.065 | .146/.166 | .026/.036 |
| 3/32 | .090/.096 | .225/.245 | .042/.052 |
| 1/8 | .121/.127 | .302/.322 | .056/.068 |
| 5/32 | .152/.158 | .381/.401 | .071/.085 |
| 3/16 | .182/.191 | .459/.479 | .087/.101 |
| 1/4 | .244/.253 | .610/.640 | .117/.133 |
| 5/16 | .305/.317 | .766/.796 | .149/.163 |
| 3/8 | .365/.380 | .923/.953 | .178/.198 |

APPROXIMATE NUMBER OF ALUMINUM RIVETS IN 1 POUND

| RIVET LENGTH "L" | SHANK DIAMETER "D" | | | | | | | |
|------------------|--------------------|-------|-------|-------|------|-----|------|-----|
| | 1/16 | 3/32 | 1/8 | 5/32 | 3/16 | 1/4 | 5/16 | 3/8 |
| 1/8 | 14,337 | 5,120 | 2,443 | 1,357 | 823 | | | |
| 3/16 | 11,225 | 4,187 | 2,055 | 1,166 | 720 | 337 | | |
| 1/4 | 9,223 | 3,542 | 1,773 | 1,022 | 640 | 305 | 169 | 103 |
| 5/16 | 7,827 | 3,069 | 1,559 | 910 | 576 | 279 | 156 | 97 |
| 3/8 | 6,798 | 2,708 | 1,391 | 820 | 523 | 257 | 145 | 90 |
| 7/16 | 6,009 | 2,422 | 1,256 | 748 | 480 | 238 | 136 | 85 |
| 1/2 | 5,383 | 2,191 | 1,145 | 684 | 443 | 222 | 127 | 80 |
| 9/16 | 4,876 | 2,000 | 1,052 | 632 | 411 | 207 | 120 | 76 |
| 5/8 | 4,456 | 1,840 | 973 | 587 | 384 | 195 | 113 | 72 |
| 11/16 | 4,102 | 1,704 | 905 | 548 | 360 | 184 | 108 | 69 |
| 3/4 | 3,800 | 1,586 | 845 | 514 | 338 | 174 | 102 | 66 |
| 13/16 | 3,557 | 1,490 | 796 | | | | | |
| 7/8 | 3,314 | 1,394 | 748 | 547 | 303 | 157 | 93 | 60 |
| 15/16 | 2,976 | 1,318 | 709 | 480 | 289 | 150 | 89 | 58 |
| 1 | 2,638 | 1,243 | 670 | 412 | 274 | 143 | 85 | 56 |
| 1 - 1/8 | 2,638 | 1,122 | 607 | 375 | 250 | 131 | 79 | 52 |
| 1 - 1/4 | 2,393 | 1,022 | 555 | 343 | 230 | 122 | 73 | 48 |
| 1 - 3/8 | | 939 | 511 | 317 | 213 | 113 | 68 | 45 |
| 1 - 1/2 | | 868 | 474 | 295 | 198 | 106 | 64 | 42 |
| 1 - 5/8 | | 811 | 443 | 277 | 186 | 100 | 60 | 40 |
| 1 - 3/4 | | 754 | 413 | 258 | 174 | 93 | 57 | 38 |
| 1 - 7/8 | | 710 | 389 | 244 | 165 | 89 | 54 | 36 |
| 2 | | 666 | 366 | 229 | 155 | 84 | 51 | 34 |

The most popular aluminum materials are 1100F ("soft") and 2117T4 ("hard") — less common alloys include 5052F, 6061T4 and 6053T61. Brazier head rivets can be produced in other materials such as carbon steel, stainless steel, copper, brass, etc. Please inquire.